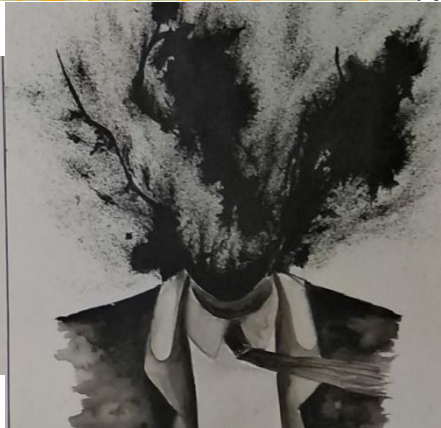
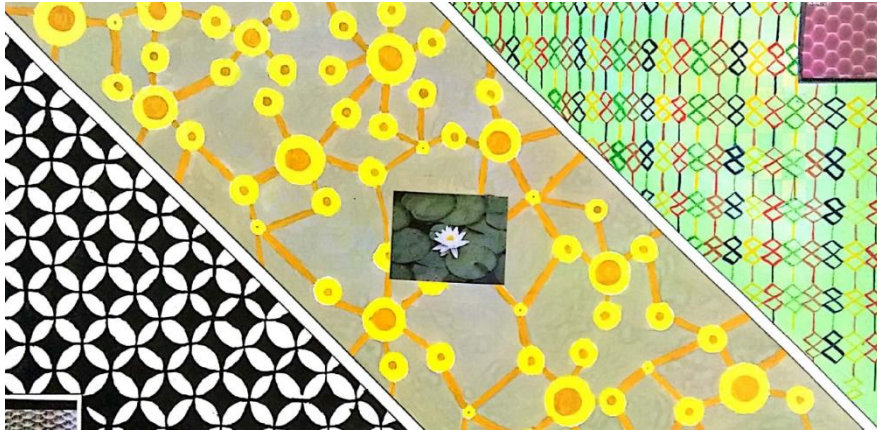


B.Arch 1 Year Students Work - Model Making

The fundamental idea is the starting point of every design. The idea is formulated into the concept; the concept is expressed in the formal language; the form requires a particular material; the space is given shape. Architecture is created.

Described in this manner, the design process seems simple and straightforward. But for students of architecture, it is in most cases a difficult learning process. But designing can be learnt.





MODEL MAKING IN ARCHITECTURE

A physical representation of the structure is important in order to study the aspects of an architectural design or to communicate design ideas. It helps in understanding the interaction of volumes.

